

WESTSIDE PUMP STATION IMPROVEMENTS

Public Meeting

December 22, 2022 6:00 p.m.

(Please note this meeting will be recorded)



CITY OF BEND

WESTSIDE PUMP STATION IMPROVEMENTS

Lisa Cameli, PE; Project Engineer, City of Bend

Brady Fuller, PE; Design Team Project Manager, Jacobs

December 22, 2022

Agenda

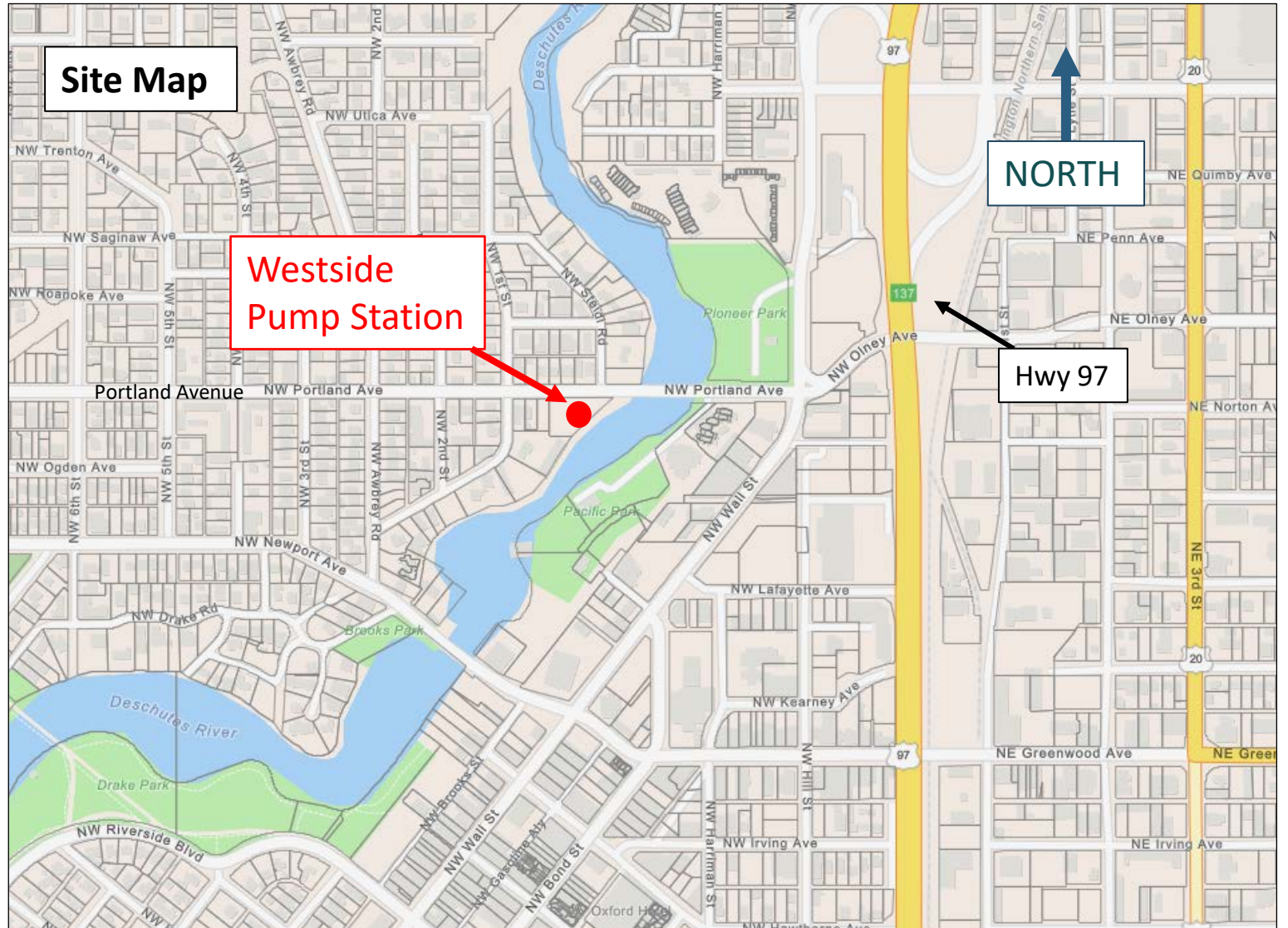
- Introductions
- Project Background & Overview
- Project Impacts
- Mitigation of Impacts
- Comments/Questions

Introductions

- Lisa Cameli, PE, Project Manager, City of Bend
- Brady Fuller, PE, Design Team Project Manager, Jacobs

Project Overview

Site Location
35 NW Portland Avenue



Pump Station Background

- Operational since 1980 with periodic updates
- Built by the City of Bend
- Serves over half of the westside of Bend
- Pump Station Capacity 4450 gpm
- Identified in the 2014 Collection System Master Plan for upgrades to mechanical and electrical equipment.

Project Overview

Project Purpose:

- Address recurring maintenance challenges
- Improve pump station mechanical and electrical controls
- Add redundancy to pump system to avoid failures
- Improve worker safety and access for ease of maintenance
- Repair damage caused by recent fire and protect site infrastructure from future incidences.
- Part of ongoing asset maintenance and management (existing facilities)

Land Use Permitting:

- City of Bend Modified Conditional Use Permit required
- In the Waterway Overlay Zone (WOZ)



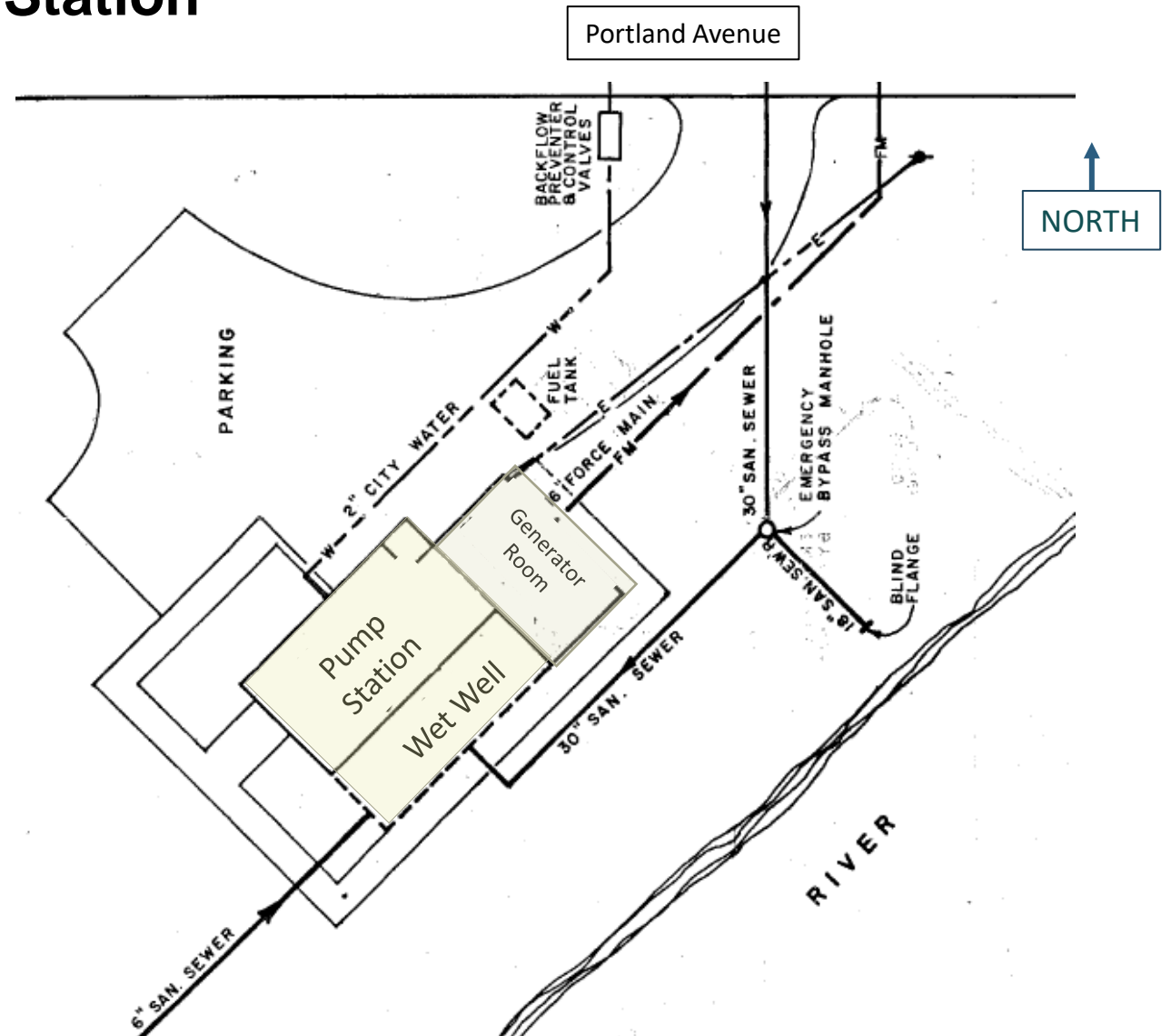
Project Overview

Existing Site – Westside Pump Station



Project Overview

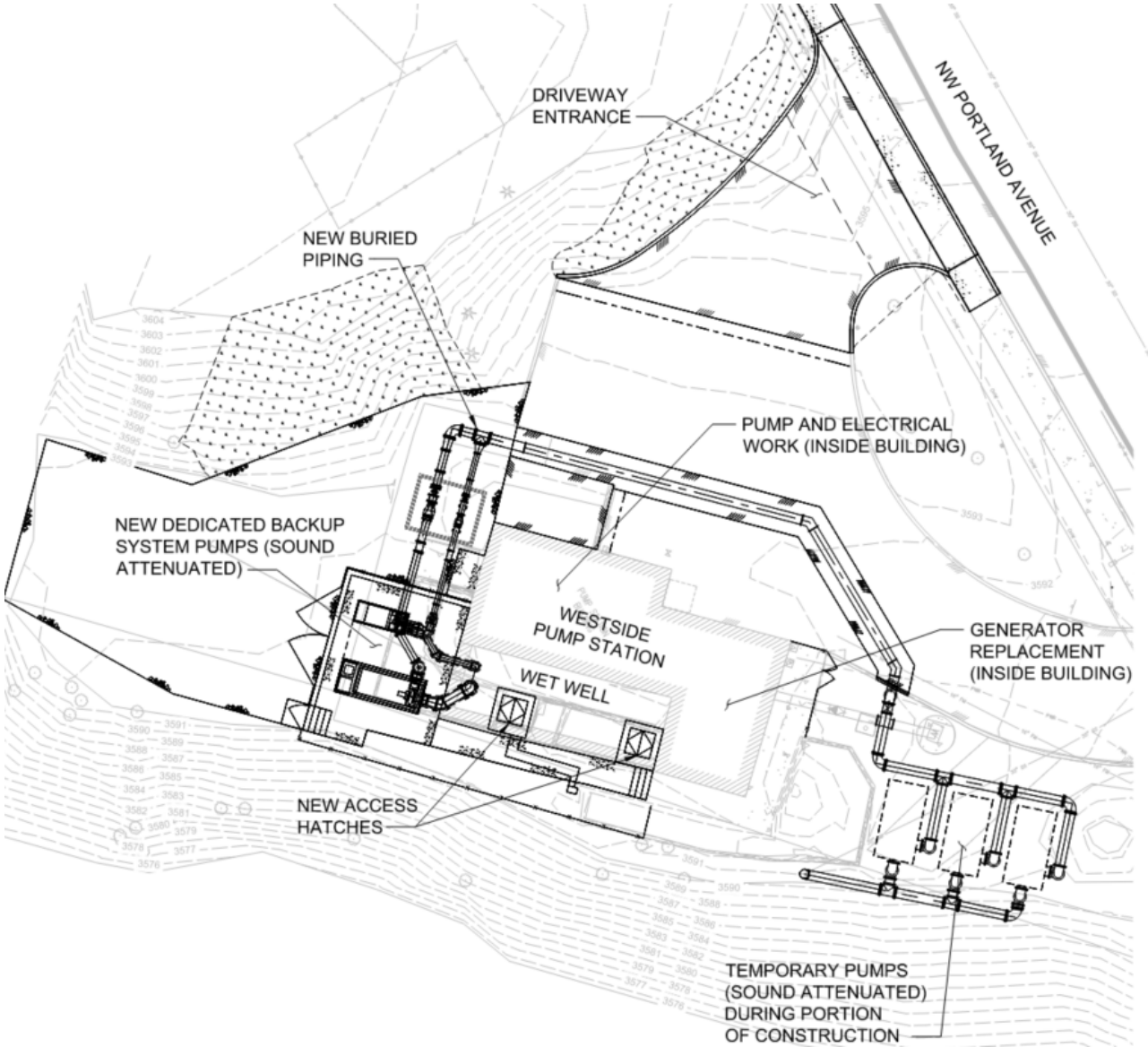
Existing Site – Westside Pump Station



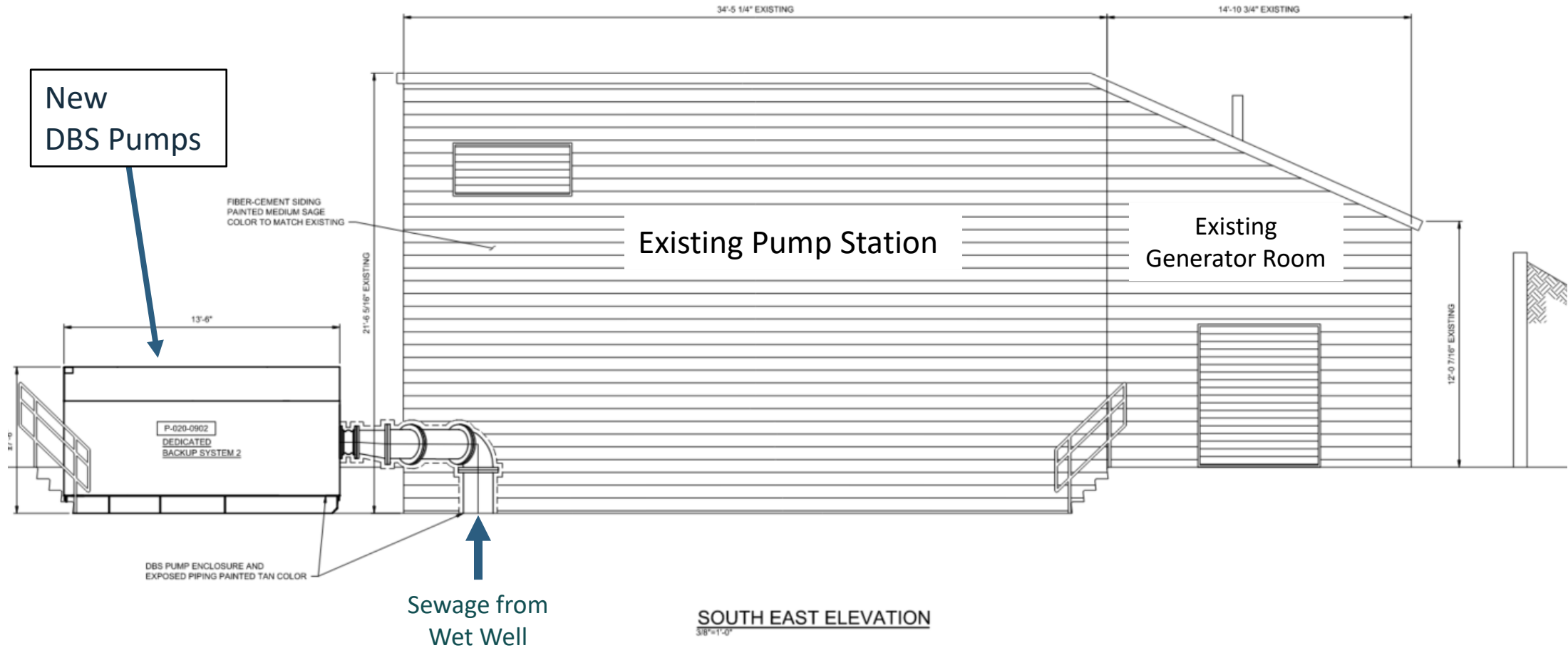
Project Overview

- Items of Work
 - Replace aging and non-code compliant electrical and mechanical equipment
 - Installation of new backup pumps (Dedicated Backup System) (DBS)
 - Replace existing emergency generator with new generator.
 - 2nd Access Driveway
 - Asphalt and gravel surfacing
 - Landscaping

Project Overview – Site Plan



Project Overview – Building Elevation



Project Overview – DBS Enclosure Sample



Note: Enclosure color will match existing building.

Project Impacts & Impact Mitigation

Short-term Impact (During Construction)

- Periodic construction traffic
 - Mitigation:
 - Contractor will minimize interruptions to traffic while moving equipment in and out of the site
- New driveway entry will require reconstruction of sidewalk.
 - Mitigation
 - Contractor will minimize closure and offer pedestrian detour.
- Periodic construction activity noise
 - Mitigation:
 - No sustained need for loud activities
 - City Standard Construction hours to 7:00 a.m. until 6:30 p.m. on weekdays. No holidays, weekends only as approved by City



Project Impacts & Impact Mitigation

Long-term Impact

- Improved worker safety
- Increased pump station resilience
- Second driveway will increase roadway safety while large maintenance vehicles enter and leave the site.
- No change in operation or capacity
- Visual impact of new DBS structure
 - Mitigation:
 - City plans to provide code-required screening using vegetation or other screening options
 - Above ground elements to be colored similar to the surrounding area and/or existing building



Project Impacts & Impact Mitigation

Long-term Impact

- Periodic noise levels during use of emergency generator and DBS pumps
 - Mitigation:
 - Generator will be operational only for weekly testing (30 minutes) and used only in the case of power outage and is housed indoors.
 - Backup Pumps (DBS) will be designed and installed to maintain code compliance (Ordinance 2188) for night-time sound attenuation levels in a residential community (60dBA)
- Increased onsite paving/impermeable area
 - Stormwater from the site will be retained on site



Project Schedule

- Current Schedule
 - Design finalized – January 2023
 - Permitting – March 2023
 - Bidding and Contracting – April 2023 – July 2023
 - Construction – Start late Summer 2023 through 2024.
 - Project has long lead-times (up to 56 weeks) for specialized equipment.

Comments?

Questions?

Thank you!

To stay updated please visit the project website at:

www.bendoregon.gov/sewer-improvements

Accommodation Information for People with Disabilities



To obtain this information in an alternate format such as Braille, large print, electronic formats, etc. please contact Lisa Cameli, Project Engineer at Lcameli@bendoregon.gov or 541-330-4042; Relay Users Dial 7-1-1.