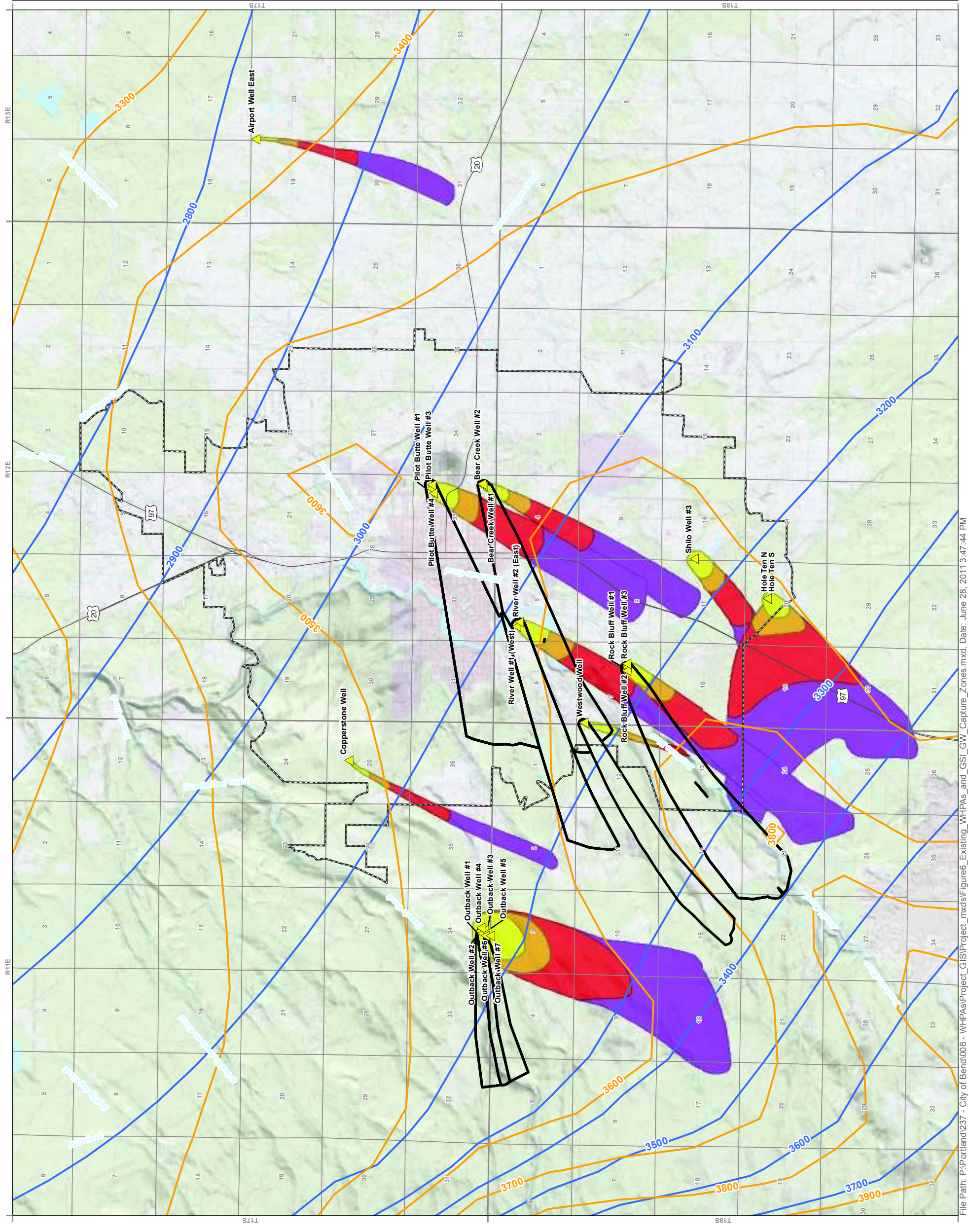


FIGURE 6
Existing Wellhead Protection Areas and
GSI's Groundwater Capture Zones
 City of Bend Wellhead Protection Areas

- LEGEND**
- Groundwater Elevations for Summer from Layer 1 of the GSI Model (Shallow)
 - Groundwater Elevations for Summer from Layer 5 of the GSI Model (Deep)
 - GSI's Groundwater Capture Zones**
 - 1 Year Time of Travel
 - 2 Year Time of Travel
 - 5 Year Time of Travel
 - 10 Year Time of Travel
 - Existing Features**
 - Existing City of Bend 2 Year TOT Wellhead Protection Areas
 - City of Bend Water Wells
 - Bend City Limits
 - Major Roads
 - Major Watercourses
 - Major Waterbodies

0 3,000 6,000 9,000
 Feet

MAP NOTES:
 Date: June 28, 2011
 Data Sources: City of Bend, USGS, ESRI, Oregon Geospatial Data Clearinghouse





OREGON PUBLIC HEALTH DIVISION
Drinking Water Program

John A. Kitzhaber, MD, Governor

COPY

Oregon
Health
Authority

August 3, 2011

Patrick Griffiths, Water Resource Coordinator
City of Bend Public Works
P. O. Box 431
Bend, Oregon 97701

444 A Street
Springfield, OR 97477
541-726-2587 ext.
FAX: 541-726-2596
www.healthoregon.org/dwp

Re: OHA Drinking Water Program Delineation Certification # 0015

Dear Patrick:

Under the Administrative Rules that apply to Oregon's EPA-approved Drinking Water Protection Program, the Oregon Health Authority has the responsibility of certifying groundwater-derived drinking water protection areas in the State (see DEQ's OAR 340-40-180 (3)). This certification is granted after technical review assures that the submitted delineations meet minimum requirements for the system as outlined in OHA's OAR 333-61-0057, and that the delineation is a hydrogeologically reasonable representation of the capture zone of the well, wellfield or spring. The delineation of the capture zones for the City of Bend wells meets the above requirements and are therefore certified collectively as Oregon Health Authority Drinking Water Program (OHA DWP) Delineation Certificate #0015.

The Bend Water Department service population exceeds 10,000. As such, OHA DWP certification qualifies the delineated areas as a significant groundwater resource for the purpose of State-Wide Planning Goal 5 (see LCDC's OAR 660-23-140). DLCDC [(503) 373-0050] can answer questions regarding state-wide planning goals.

As you continue your efforts in implementing drinking water protection strategies, the Drinking Water Program can provide technical assistance. To complete this process please forward an ARCGIS compatible shapefile of the delineated capture zones to Steve Aalbers of DEQ (503-229-6798).

We appreciate the investment that the Bend Water Department is making on behalf of its drinking water resource. We also wish to thank you for your continued and constructive assistance in the development of Oregon's Drinking Water Protection Program.

Sincerely,

Tom Pattee
Groundwater Coordinator
OHA Drinking Water Program

cc: Sheree Stewart, DEQ; Bruce Brody-Heine, GSI Water Solutions, Inc.; Wendy Edde, City of Bend; Tom Hickmann, City of Bend