



CITY OF BEND

Houselessness Solutions & Public Land Closures

Amy Fraley, Senior Program Manager

Brook O'Keefe, Shelter Coordinator

May 14, 2025

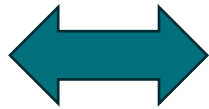
Houselessness: 2025 Point-in-Time Count

Bend



1001 people experiencing houselessness*

Houselessness in Bend



Up 4% in 2025
Down 5% in 2024 (959)

Shelters



543
Beds in Bend



226
Low-barrier beds



CITY OF BEND

City-led Solutions:

City Council Directed 25/27 Biennium Objectives (pending)

- Maintain 500+ beds City-wide (272 direct support) – Currently 543
- Create additional Safe Parking spaces



STEPPING STONE
56 BEDS



**NAVIGATION
CENTER**
100 BEDS



**CENTRAL OREGON
VILLAGES**
20 UNITS



SAFE PARKING SPOTS
26 BEDS

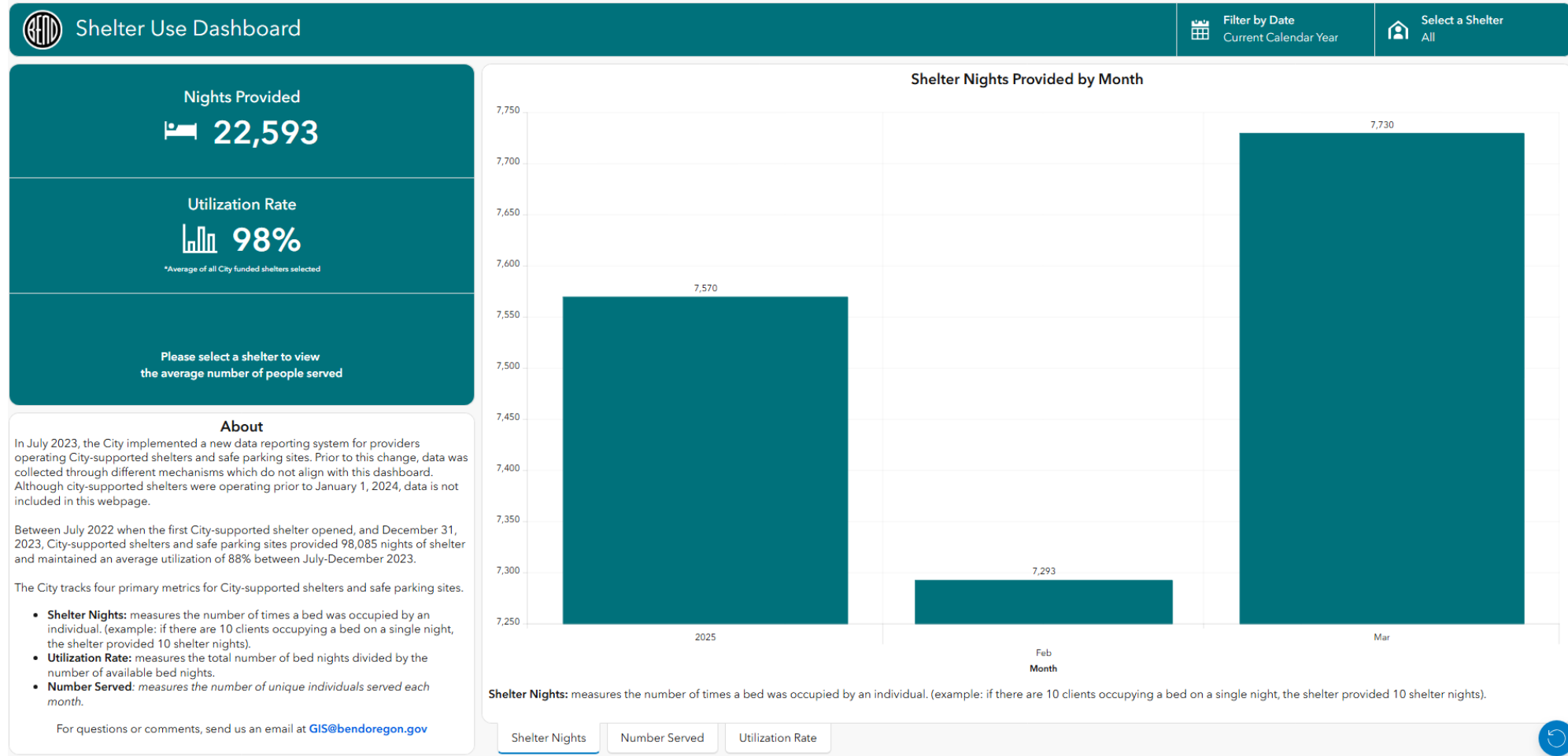


FRANKLIN SHELTER
70 BEDS

82,253 Nights of Shelter Provided in 2024



Housing Dashboard



Public Land Closures

Forest Service –May 1 Cabin Butte Vegetation Management Project/ China Hat

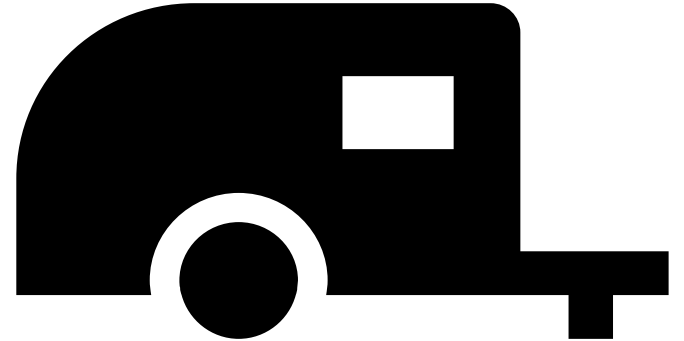
City of Bend – May 31 Juniper Ridge east of the railroad tracks

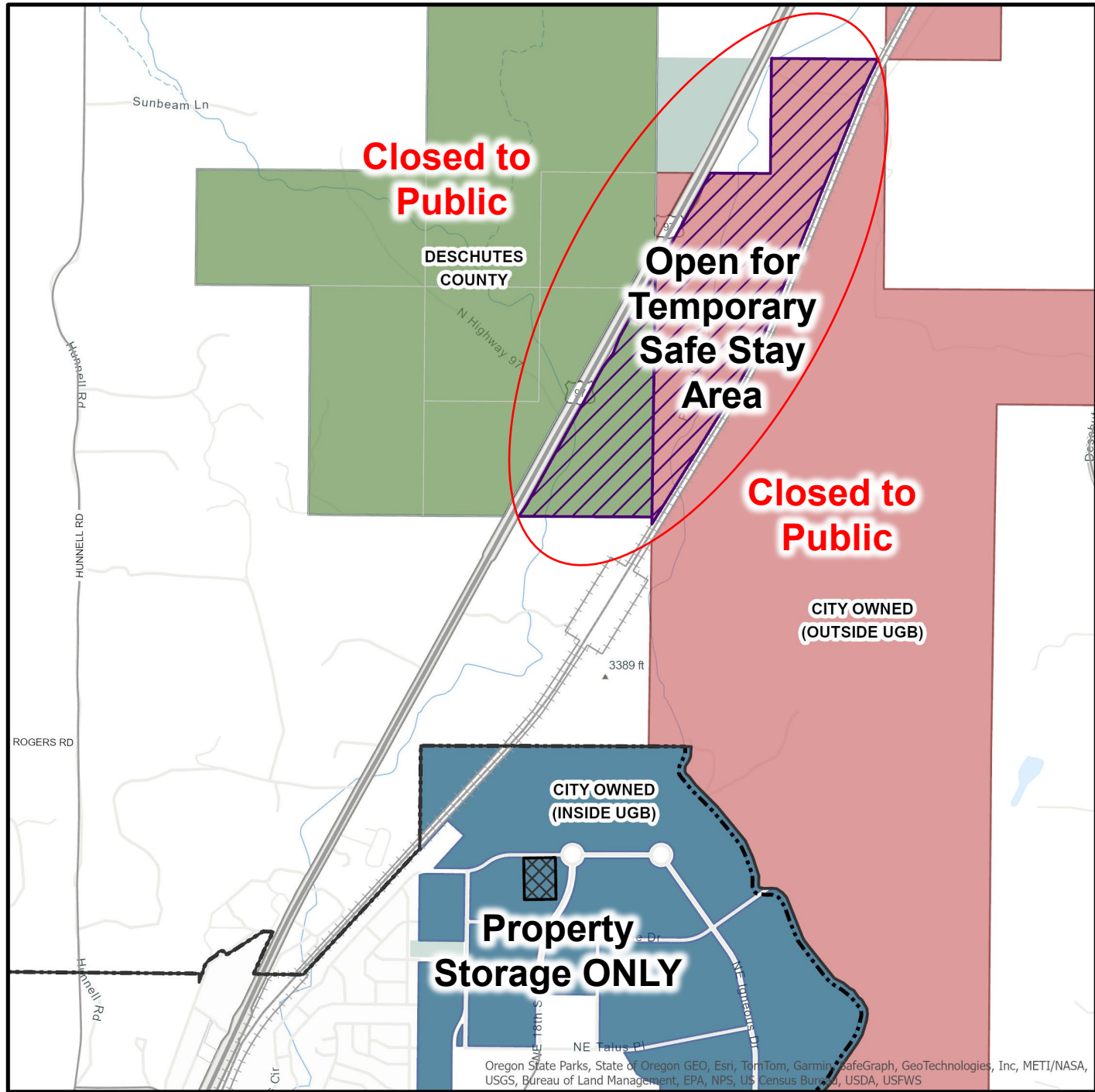
Bureau of Land Management – May 31 Juniper Ridge

City of Redmond – Fall 2025

Where did people go w/ China Hat closure? 100-200 people

- Cleveland Commons - 10 households to Permanent Supportive Housing
- Old Mill Apartments – 21 people from China Hat for the last several weeks
- COV Annex (Safe Parking) – 6 new tiny home units opening
- Franklin Avenue Shelter – 10 additional beds added
- Temporary Safe Stay Area: Total 109 Camps/139 Occupants
 - Prior 75 Camps, 95 Occupants
 - New 34 Camps, 44 Occupants





JUNIPER RIDGE

AUGUST 2024

- City Owned (Inside UGB)
- City Owned (Outside UGB)
- Deschutes County
- Restricted Camping Area
- Crusher Site #2
- Urban Growth Boundary
- City Limits
- Schools
- Major Roads
- Major Streets
- Railroad
- Taxlots
- River
- Parks

0 0.13 0.25 0.5 Mi



Map prepared by , City of Bend
Print Date: Aug 29, 2024
Sources: City of Bend, Deschutes County



CITY OF BEND

This map is for reference purposes only. Care was taken in the creation of this map, but it is provided "AS IS." Please contact the City of Bend to verify map information or to report any errors.



CITY OF BEND

Grants at the TSSA

Grantees	City/County TSSA
NeighborImpact	\$ 50,000.00
Central Oregon Villages	\$ 183,863.00
Shepherd's House Ministries	\$ 223,132.00
REACH	\$ 273,331.00
Home More Network	\$ 154,700.00
Companion Animal Medical Project	\$ 100,000.00
Mosaic Medical	\$ 135,906.00
Total	\$ 1,120,932.00



Temporary Safe Stay Area

The Temporary Safe Stay Area (TSSA) at Juniper Ridge is on property owned by both Deschutes County and the City of Bend. The TSSA is a designated area west of the railroad tracks specifically created for vehicle camping with hygiene and trash services. It will be open until December 2026.

The rules below are intended to maintain the health and safety of the people camping and in the surrounding neighborhoods.



Critical TSSA Rules

- Vehicle camping is permitted within the designated TSSA areas west of the railroad tracks (map on the back).
- Construction, including vehicle additions and fencing, is not allowed
- Any action causing damage or injury, including threats to physical safety will result in removal from the TSSA
- Dumping of black or gray water (used water and human waste) is prohibited
- Only authorized roads and access points can be used by campers
- Trash will be disposed of in dumpsters or in the yellow bags for pick up
- All open flames and fires, including recreational fires, burning garbage, bonfires, or other flames, are prohibited. Propane or similar gas-fueled camp stoves, heaters, and lanterns are permitted, but any heat source must be kept 3 feet from combustibles, cannot be used inside of a vehicle, and must be deemed safe by Bend Fire and Rescue.
- Discharge of firearms is prohibited
- Damage to physical property, infrastructure, and/or the environment will result in removal
- Inoperable cars/vehicles and unused tires should not be stored at the TSSA
- Animals and pets must be kept on leash and under control of the owner at all times

Not following the rules are grounds for immediate or emergency removal – at the discretion of the County or City and/or Law Enforcement. Depending on the situation campers may also be given a 24- or 72-hour notice or other time period and/or an opportunity to address or remedy the issue.

Please respect other campers' space and property. Noise levels should be kept at a volume to be heard only within a single campsite.



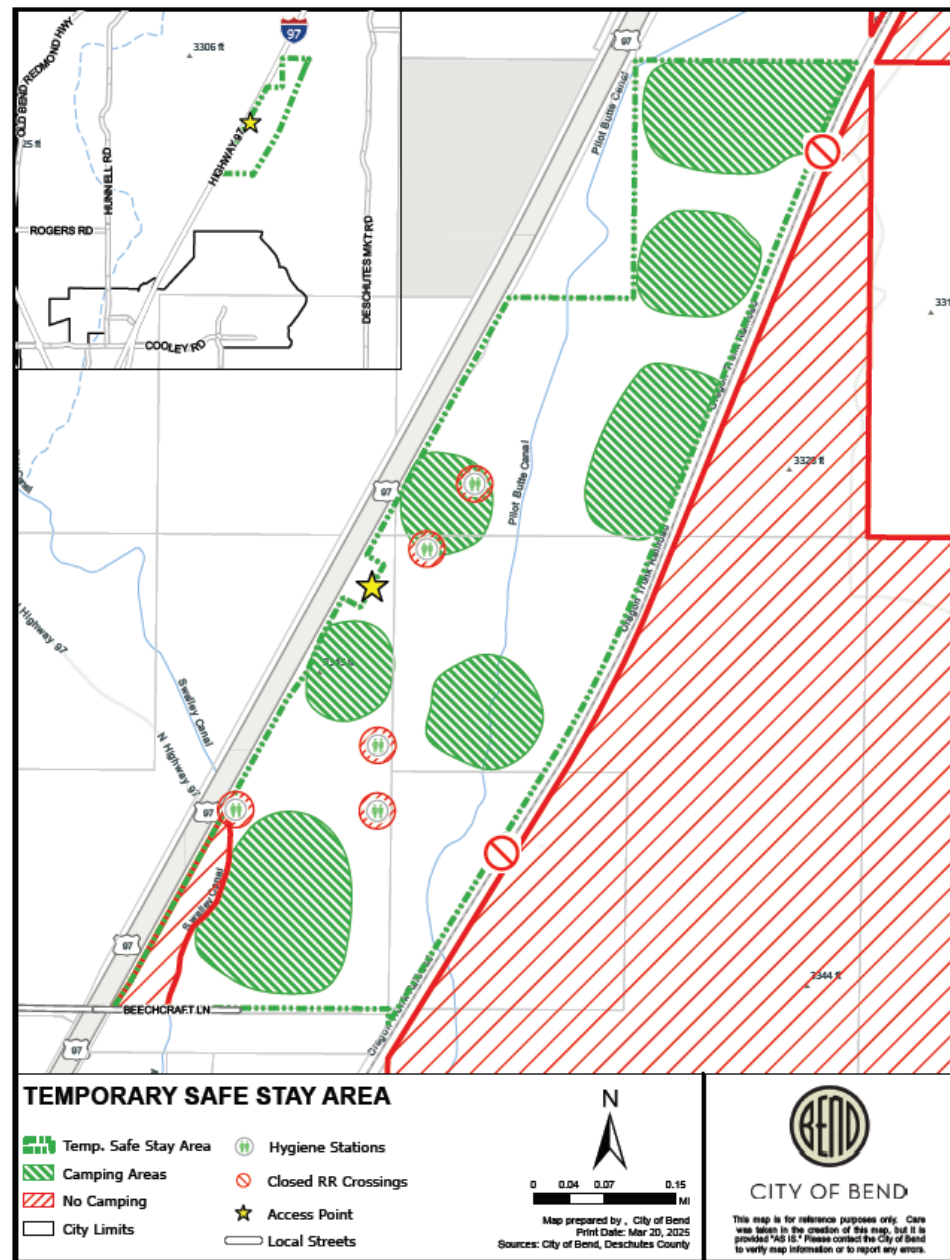
Language Assistance Services & Accommodation Information for People with Disabilities

You can obtain this information in alternate formats such as Braille, electronic format, etc. Free language assistance services are also available. Please contact Amy Fraley at afraley@bendoregon.gov or 541-388-5510. Relay Users Dial 7-1-1.



Servicios de asistencia lingüística e información sobre alojamiento para personas con discapacidad

Puede obtener esta información en formatos alternativos como Braille, formato electrónico, etc. También disponemos de servicios gratuitos de asistencia lingüística. Póngase en contacto con Amy Fraley en afraley@bendoregon.gov o 541-388-5510. Los usuarios del servicio de retransmisión deben marcar el 7-1-1.



For emergencies call 911

Compass Security 24 hour line: 541-406-3992 for non-emergency TSSA related concerns



To obtain this information in an alternate format such as Braille, large print, electronic formats, etc. please contact Amy Fraley at afraley@bendoregon.gov or 541-388-5510 Relay Users Dial 7-1-1.

