

Downtown Bend Parking Study
Summary of Parking Inventory and Proposed Spring Data Collection Area
 April 11, 2016 (as presented to DSAC)

Figure A
Map of Inventory Area, Proposed Study Zone and All Off-street Facilities

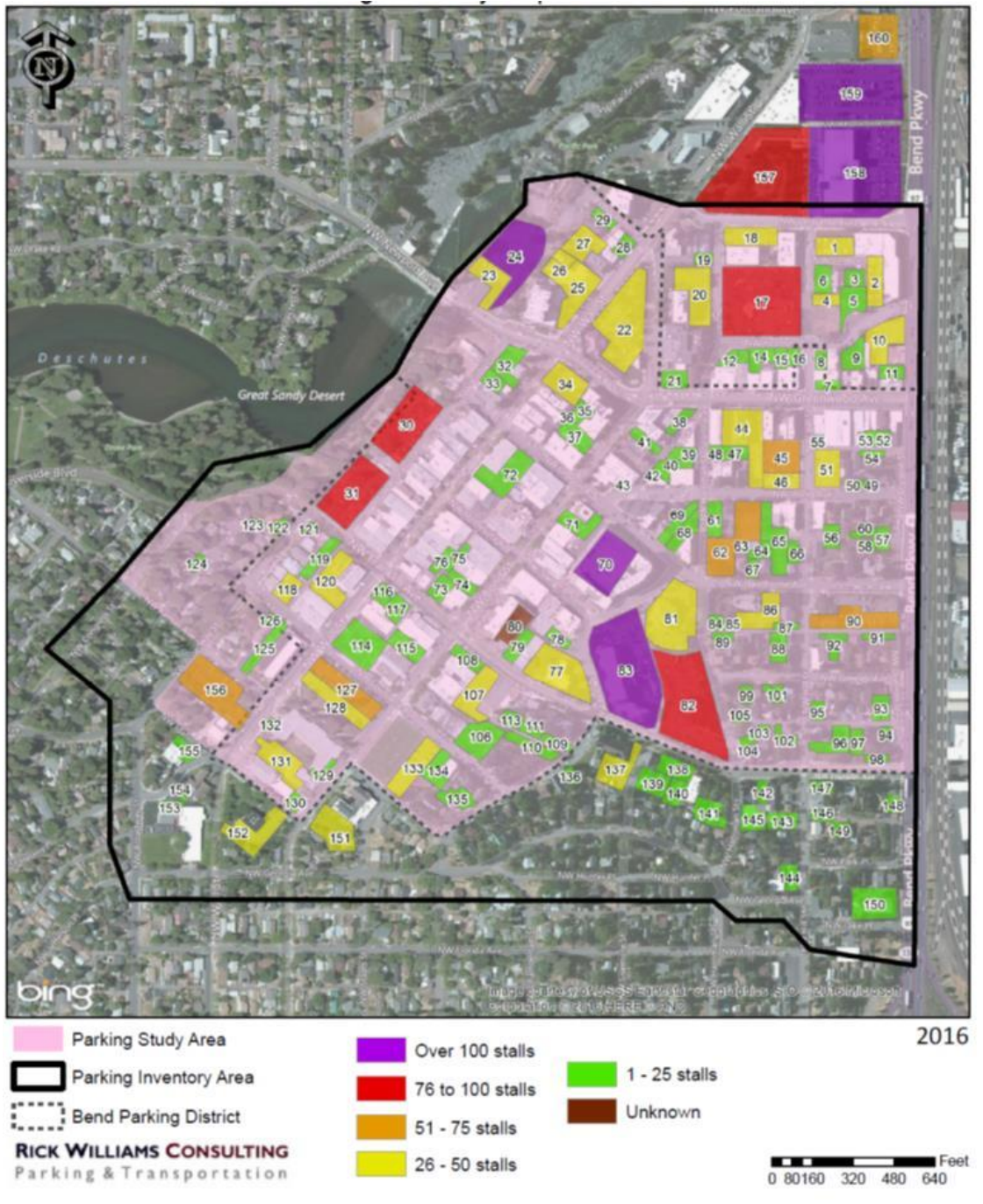


Table 1
2016 Bend Downtown Parking Inventory

| Stalls by Type | All | % of Total | Study Area | % of Total |
|--|--------------|-------------------|-------------------|-------------------|
| 15 Minutes | 23 | 1.3% | 21 | 1.6% |
| 30 Minutes | 1 | < 1% | 1 | < 1% |
| 30 Minutes (Unless Otherwise Specified) | 10 | < 1% | 10 | < 1% |
| 2 Hours | 709 | 39.7% | 675 | 51.6% |
| 2 Hours (Unless Otherwise Specified) | 237 | 13.3% | 237 | 18.1% |
| No Limit | 754 | 42.2% | 311 | 23.8% |
| Accessible Stalls (ADA) | 35 | 2.0% | 33 | 2.5% |
| Electric Vehicle Only | 2 | < 1% | 2 | < 1% |
| Authorized Vehicles Only | 9 | < 1% | 9 | < 1% |
| Police Only | 8 | <1% | 8 | < 1% |
| <i>On-Street Supply</i> | <i>1,788</i> | <i>100%</i> | <i>1,307</i> | <i>73.1%</i> |
| <i>Off-Street Supply</i> | <i>4,011</i> | <i>100%</i> | <i>3,760</i> | <i>93.7%</i> |
| Total Parking Supply | 5,799 | 100% | 5,067 | 87.4% |

Table 2
Downtown Bend Off-Street: Inventory by Lot
(Lot Number Correlates to Figure A Map)

| Lot Number | Facility Identification | # of Stalls | % of Total |
|-------------------|----------------------------------|--------------------|-------------------|
| 1 | Tax Drop Box | 30 | 0.8% |
| 2 | Deschutes County | 27 | 0.8% |
| 3 | Law Firm Parking | 10 | 0.3% |
| 4 | State Fire Marshal Truck - Gated | 26 | 0.7% |
| 5 | Century Link | 22 | 0.6% |
| 6 | Francis, Hansen, Martin | 18 | 0.5% |
| 7 | Vacant Lot | 8 | 0.2% |
| 8 | Vacant Lot | 10 | 0.3% |
| 9 | Naus | 20 | 0.6% |
| 10 | Silvermoon Brewing | 35 | 1.0% |

| | | | |
|----|--|-----|------|
| 11 | Oxiliary | 11 | 0.3% |
| 12 | Carl W Hopp/academic De Ballot Classique | 14 | 0.4% |
| 13 | Bend Theatre for young people | 4 | 0.1% |
| 14 | Bendtel Inc | 22 | 0.6% |
| 15 | Olde Towne Pizza | 9 | 0.3% |
| 16 | MJ Tavern/Nelson Laundry | 10 | 0.3% |
| 17 | Deschutes Co. Annex Bldg | 80 | 2.3% |
| 18 | Co Services Bldg | 33 | 0.9% |
| 19 | True Gospel United Peutescostal Church | 6 | 0.2% |
| 20 | Public Safety Bldg | 34 | 1.0% |
| 21 | Deschutes Co. Courthouse - 2 hr customer parking | 11 | 0.3% |
| 22 | Bank of Cascades | 46 | 1.3% |
| 23 | 70 Newport Chinese & Sushi bar/journey | 30 | 0.8% |
| 24 | Permit Parking Only | 104 | 2.9% |
| 25 | Columbia Bank/RBC Wealth Mgmt Upper Structure | 33 | 0.9% |
| 26 | 1133 NW Wall Lower Structure | 28 | 0.8% |
| 27 | 1183 NW Wall (behind/below) | 33 | 0.9% |
| 28 | 1197/1199 Oregrown | 8 | 0.2% |
| 29 | 325 Building | 3 | 0.1% |
| 30 | North Lot | 79 | 2.2% |
| 31 | South Lot | 97 | 2.7% |
| 32 | Bank of America | 17 | 0.5% |
| 33 | Permit Parking Only | 18 | 0.5% |
| 34 | Public 2hr parking | 33 | 0.9% |
| 35 | Private Permit Only | 10 | 0.3% |
| 36 | US Bank | 21 | 0.6% |
| 37 | Tenant Parking Only | 4 | 0.1% |
| 38 | Crabtree and Ramsdorf Employees | 11 | 0.3% |
| 39 | Unmarked | 24 | 0.7% |
| 40 | Alpine Mortgage/Deschutes Land Trust | 14 | 0.4% |
| 41 | Bank of Cascades | 11 | 0.3% |
| 42 | Peterkin Associates | 3 | 0.1% |
| 43 | Cole Brett | 7 | 0.2% |
| 44 | Unmarked Lot | 45 | 1.3% |
| 45 | Gateway Plaza - Permit Only | 57 | 1.6% |
| 46 | First American Title | 28 | 0.8% |
| 47 | Irving Professional Building | 10 | 0.3% |
| 48 | Only for Old Cigar | 8 | 0.2% |
| 49 | Unmarked | 3 | 0.1% |
| 50 | Unmarked | 3 | 0.1% |
| 51 | I Mortgage | 26 | 0.7% |

| | | | |
|----|--|-----|-------|
| 52 | Unmarked | 3 | 0.1% |
| 53 | Pfeifer and Associates | 5 | 0.1% |
| 54 | Mom's Tattoos | 5 | 0.1% |
| 55 | Resort Resources | 7 | 0.2% |
| 56 | Lucas Hovie Parking | 10 | 0.3% |
| 57 | Cascade Network | 9 | 0.3% |
| 58 | Law Office | 5 | 0.1% |
| 59 | Zivney Parking | 4 | 0.1% |
| 60 | Bend Counseling And Bio Feed | 6 | 0.2% |
| 61 | Gravel Lot | 24 | 0.7% |
| 62 | Cascade Transitions Crest Staff and Client | 64 | 1.8% |
| 63 | Lerr, Oliver & Company | 4 | 0.1% |
| 64 | Thomas E Wold D.M.O | 10 | 0.3% |
| 65 | Niswonger, Reynolds Chapel | 15 | 0.4% |
| 66 | Medical Cannabilism | 7 | 0.2% |
| 67 | A Muse Studio | 7 | 0.2% |
| 68 | Building 18 | 8 | 0.2% |
| 69 | Foundry Church | 17 | 0.5% |
| 70 | Public Parking Garage | 547 | 15.4% |
| 71 | On Point Credit Union | 19 | 0.5% |
| 72 | Wells Fargo | 24 | 0.7% |
| 73 | Bank of Cascades | 14 | 0.4% |
| 74 | Fresh Bread | 12 | 0.3% |
| 75 | Reserved | 13 | 0.4% |
| 76 | Reserved for Tenant Parking | 16 | 0.5% |
| 77 | Chase Bank | 35 | 1.0% |
| 78 | Permit Parking Only | 7 | 0.2% |
| 79 | Connecting Point Computer | 20 | 0.6% |
| 80 | Private Parking Under Ground | N/A | |
| 81 | Amerititle | 41 | 1.2% |
| 82 | Alexander Drake | 92 | 2.6% |
| 83 | DoubleTree | 104 | 2.9% |
| 84 | Accounting Group | 9 | 0.3% |
| 85 | Residential | 5 | 0.1% |
| 86 | Biz Park | 40 | 1.1% |
| 87 | Residential | 10 | 0.3% |
| 88 | Retail/Commercial | 18 | 0.5% |
| 89 | Law Office | 6 | 0.2% |
| 90 | Hawthorne Square Parking | 62 | 1.8% |
| 91 | Residential | 12 | 0.3% |
| 92 | Mixed Use/Retail | 9 | 0.3% |

| | | | |
|-----|--|----|------|
| 93 | Unknown | 9 | 0.3% |
| 94 | Unknown | 2 | 0.1% |
| 95 | Law Office | 7 | 0.2% |
| 96 | Pet Place | 4 | 0.1% |
| 97 | SEND Transportation | 20 | 0.6% |
| 98 | Residential | 8 | 0.2% |
| 99 | Saving Grace Counseling | 5 | 0.1% |
| 100 | The Steele Law Firm | 2 | 0.1% |
| 101 | Three Rivers | 7 | 0.2% |
| 102 | Shelton Kelley Realtor | 15 | 0.4% |
| 103 | American Family Insurance | 4 | 0.1% |
| 104 | Putient Healthcare | 6 | 0.2% |
| 105 | Christmas Preserce Retail | 7 | 0.2% |
| 106 | Old St. Francis Mcmenamims Guests Only | 25 | 0.7% |
| 107 | Reserved Stalls | 32 | 0.9% |
| 108 | Pangea International Cuisine, Thump Coffee, Fire in Bend | 14 | 0.4% |
| 109 | Reserved for Brooks Resources Corporation | 15 | 0.4% |
| 110 | Reserved for McMenamims | 12 | 0.3% |
| 111 | Salud Parking | 2 | 0.1% |
| 112 | Reserved for Remax | 3 | 0.1% |
| 113 | Tenant/The Broker Network | 9 | 0.3% |
| 114 | City Business Parking Only | 20 | 0.6% |
| 115 | Autorized Vehicles Only | 22 | 0.6% |
| 116 | The Oregon Store | 10 | 0.3% |
| 117 | Customer 2hr Free Parking | 13 | 0.4% |
| 118 | City Employee Parking Only | 28 | 0.8% |
| 119 | Tenant Parking Only | 23 | 0.6% |
| 120 | Wall Street Plaza | 39 | 1.1% |
| 121 | Park Building Office Suites | 5 | 0.1% |
| 122 | Law Offices Brothers, Hawn and Coughlin | 7 | 0.2% |
| 123 | Sundownder Capital Management + LLC | 3 | 0.1% |
| 124 | Lara House Bed and Breakfast | 6 | 0.2% |
| 125 | Deschutes Library Parking Only Alley | 15 | 0.4% |
| 126 | Law Office Alley-Lis Fancherr Attn | 4 | 0.1% |
| 127 | 2 hr parking/ Permit Parking | 68 | 1.9% |
| 128 | School District Permit Parking Only | 45 | 1.3% |
| 129 | Education Center Bned/La Pine school district | 12 | 0.3% |
| 130 | Bend Community Radio Entrance | 8 | 0.2% |
| 131 | Boys and Girls Clubs of Bend | 33 | 0.9% |
| 132 | No Name | 4 | 0.1% |
| 133 | 2 hr parking/ Permit Parking | 41 | 1.2% |

| | | | |
|-----|---|-------|--------|
| 134 | Hawthorn Healing Arts Center | 17 | 0.5% |
| 135 | Residential | 16 | 0.5% |
| 136 | Residential Rental | 6 | 0.2% |
| 137 | Church Parking | 31 | 0.9% |
| 138 | Mixed Use/Commercial | 10 | 0.3% |
| 139 | Commercial | 12 | 0.3% |
| 140 | Kate's Place | 15 | 0.4% |
| 141 | Law Office | 8 | 0.2% |
| 142 | Small World Collection | 3 | 0.1% |
| 143 | Chop Hair | 2 | 0.1% |
| 144 | Tuner Automotive | 8 | 0.2% |
| 145 | Old Stone Church Parking | 21 | 0.6% |
| 146 | ReVive | 6 | 0.2% |
| 147 | Cascade Summit Insurance | 5 | 0.1% |
| 148 | Retail/Commercial | 3 | 0.1% |
| 149 | Engineering | 9 | 0.3% |
| 150 | Griffen Heating and Cooling | 13 | 0.4% |
| 151 | First United Methodist Church | 35 | 1.0% |
| 152 | Deschutes Historical Museum | 41 | 1.2% |
| 153 | School St Helens/ Broadway - Amitty Creek Magnet School | 10 | 0.3% |
| 154 | Trinity Episcopal Church | 1 | 0.0% |
| 155 | Trinity Episcopal Church | 12 | 0.3% |
| 156 | Deschutes Library Parking Only | 64 | 1.8% |
| | Off-Street Supply ¹ | 4,011 | 100.0% |
| | Proposed Study Area Off-Street Supply | 3,760 | 93.7% |

¹ Facilities in red are outside of proposed study area.